

MODULAR CHECK VALVE



Technical Specification

Specification	02	03
Working pressure (Bar)	315	
Max. Flow (L/min)	40	100
Working fluid	Mineral oil; phosphate-ester	
Fluid temp. (°C)	-20~70	
Viscosity (mm ² /s)	2.8~380	
Opening pressure (bar)	a: 0.50 b: 2.50 c: 4	
Cleanliness	The maximum allowable cleanliness of the oil should be according to 9th degree of Standard NAS 1638. It is suggested that the minimum filter rating should be $\beta_{10} \geq 75$.	

Model Description

WMC - * * - * / * 70 *

Modular check valve

Specification
02 : DN6
03 : DN10

P : P Pipeline
T : T Pipeline
A : A Pipeline
B : B Pipeline
W : AB Pipeline

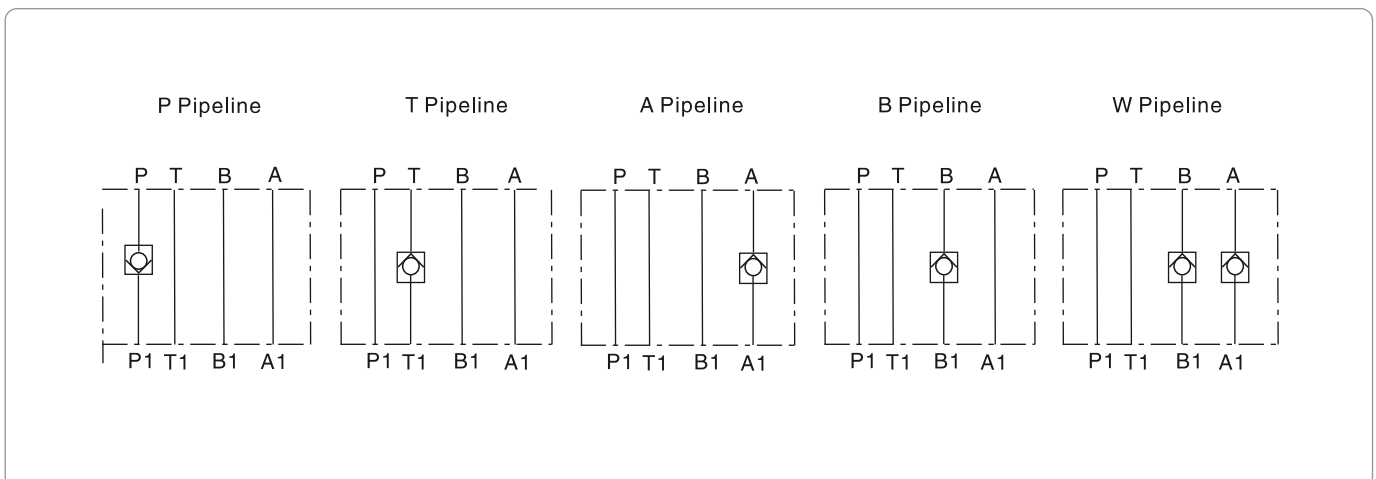
Remarks

Serial number

Seal material
Omit : NBR Seals
V : FPM Seals

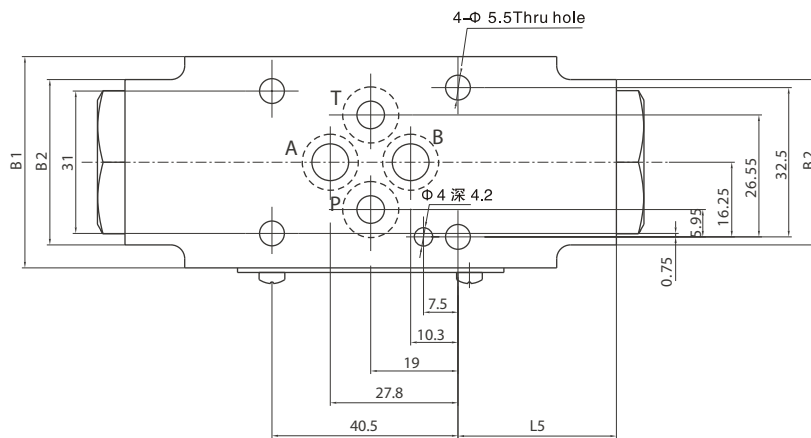
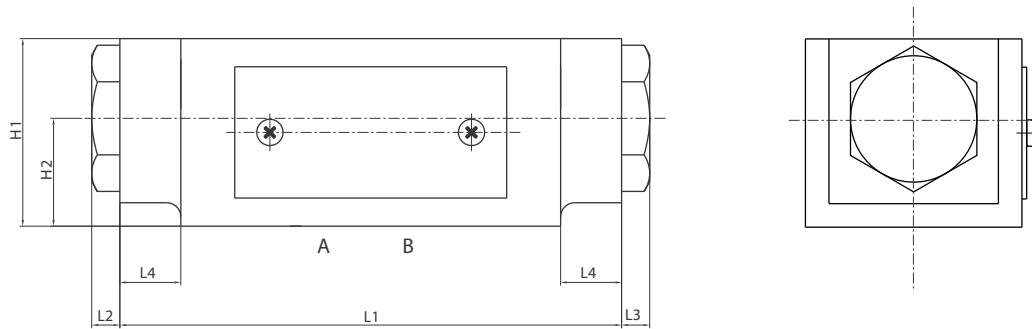
Opening Pressure
a: 0.50
b: 2.50
c: 4

Code symbol



MODULAR CHECK VALVE

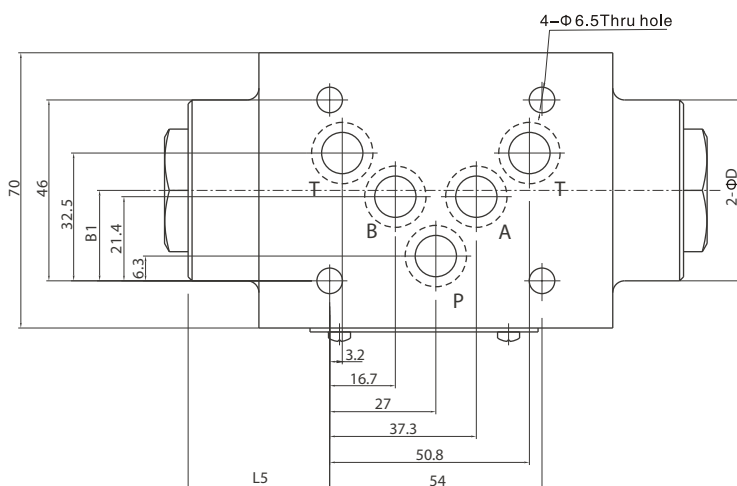
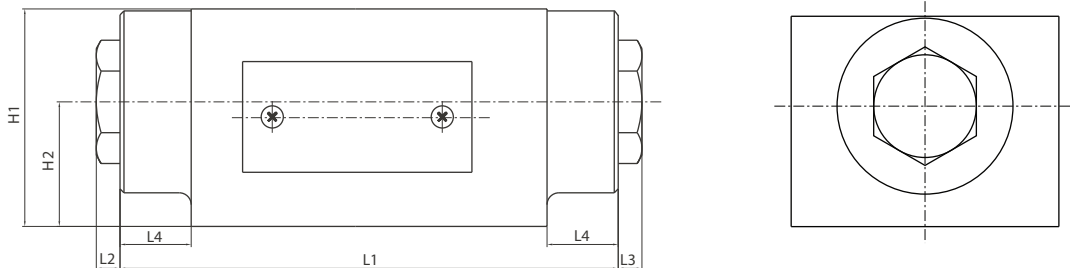
02 External dimensions



Specification	B1	B2	H1	H2	L1	L2	L3	L4	L5
WMC-02-A	46	-	40	20	80	6	-	-	20
WMC-02-B	46	-	40	20	80	-	6	-	20
WMC-02-P	46	-	40	20	80	-	6	-	20
WMC-02-T	46	-	40	20	80	-	6	-	20
WMC-02-W	46	36	40	23	107	6	6	13	34.5

MODULAR CHECK VALVE

03 External dimensions



Specification	D	B1	H1	H2	L1	L2	L3	L4	L5
WMC-03-A	-	55	55	27.5	80	-	6	-	10
WMC-03-B	-	18.5	55	27.5	80	6	-	-	16
WMC-03-P	-	15.8	55	27.5	80	-	6	-	16
WMC-03-T	-	23	55	27.5	100	-	6	-	19.5
WMC-03-W	46	23	55	27.5	126	6	6	18	36
WMC-03-WT	-	32.5	55	27.5	150	6	6	-	48